

Printing to the Oki C9500 printer in R76

I have been able to set up the OKI printer to print from the visitor's network using Internet Printing Protocol (IPP).

Before installing the printer, please insure you have the correct printer drivers installed. Drivers can be downloaded from

<http://www.oki.co.uk/fcgi-bin/public.fcgi?pid=9&cid=125&pdflag=2&prid=404>

The printer path is - http://130.246.40.1/printers/MICE_R76_OKI/.printer

Here is a website that I've Googled, with help to setting-up an IPP printer.

http://www.plbio.life.ku.dk/English/The-department/IT/User_guides/IPP-Print.aspx

Here is something I've done

Windows 64 BIT operating system

http://130.246.40.1/printers/MICE_R76_OKI/.printer or

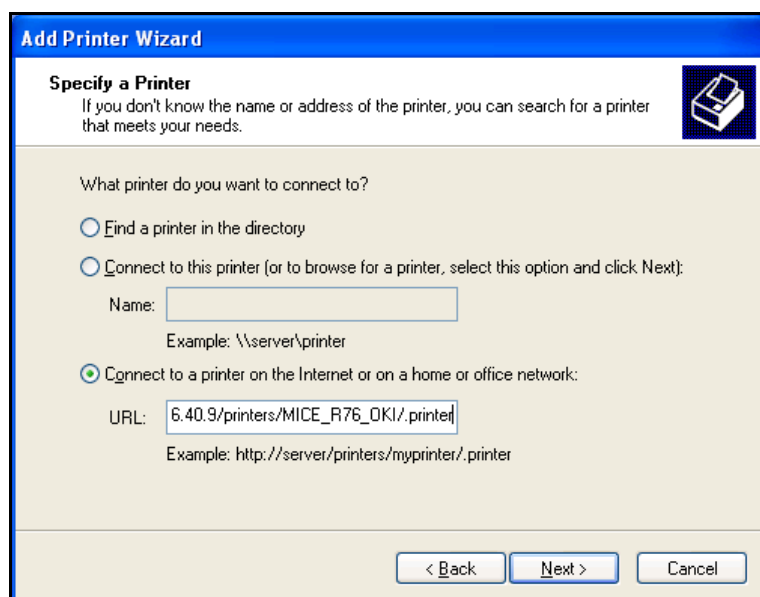
http://hepwin2008a.pp.rl.ac.uk/printers/MICE_R76_OKI/.printer

Windows XP configuration

Go to printers and select add printers and select 'Add printers'.

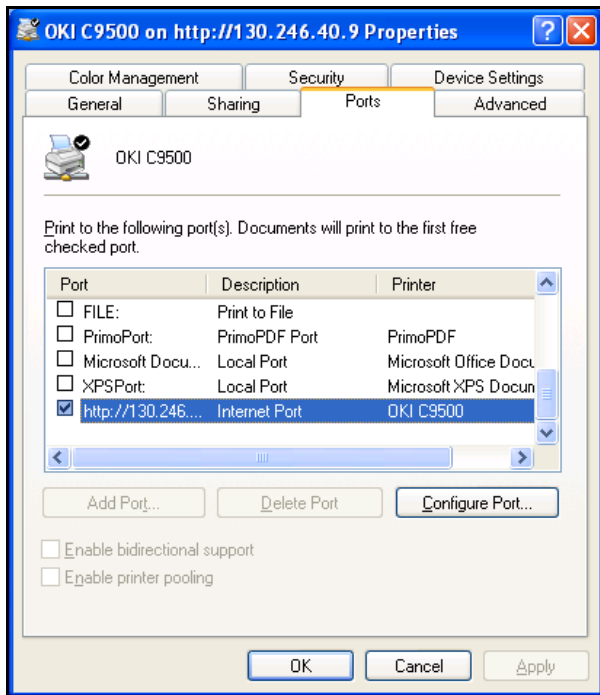
Select add a new network printer and connect using a URL -

http://130.246.40.1/printers/MICE_R76_OKI/.printer



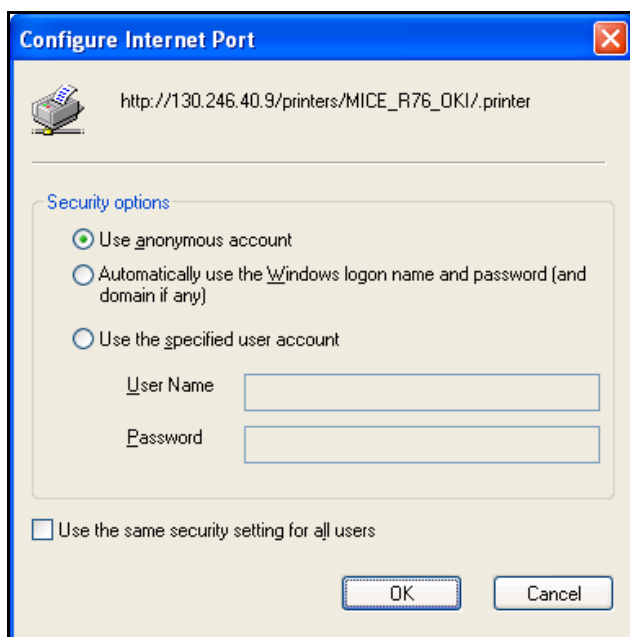
You might need to add an account to use the printer.

Right click on printer and select properties. From the printer properties window select Ports then highlight the internet port and select configure port.



Select the 'use the specified user account' and use the following account details.

User name: 130.246.40.9\mice
Password: r76_mice (case sensitive)



Mac operating systems configuration

From a Macintosh one accesses the OKI printer via lpd, not http. The address is hepwin2008i.pp.rl.ac.uk and the queue name is MICER76OKI.